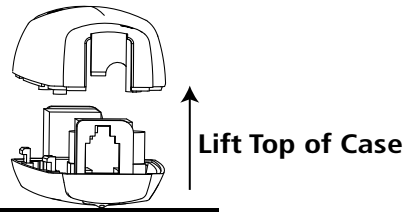
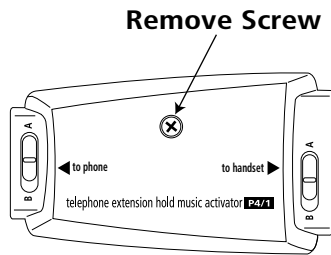


**1**  
step

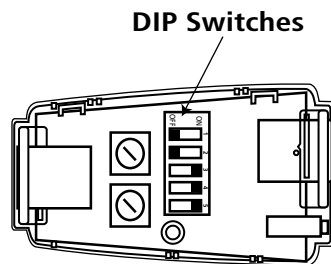
### Open TEHMA



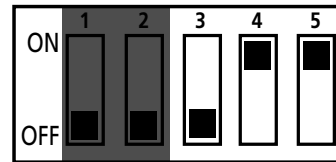
- 1 Using a small Phillips head (cross point) screwdriver, Remove the screw on the printed side of the TEHMA.
- 2 Turn over the TEHMA and place it on a flat surface with the **printed side down**
- 3 Carefully lift top of case to expose circuit board.

**2**  
step

### Reset DIP Switches

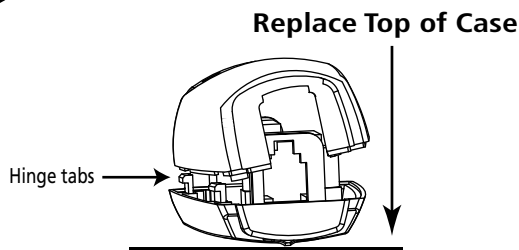


- 1 Locate dip switches
- 2 Using your fingernail or small object, set switch position as shown in diagram below.

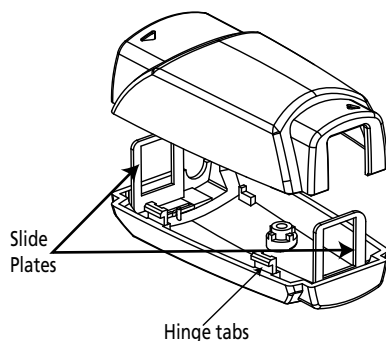


**3**  
step

### Reassemble TEHMA



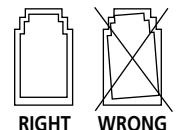
TEHMA case exploded view.



- 1 Hook hinge tabs on bottom of case into recesses inside top of case (see diagram).
- 2 Rotate top case closed making sure that there is no gap on either side.
- 3 Replace screw.

#### **IMPORTANT!**

TEHMA will not function if the handset cord is not plugged in straight



NOTE: If the slide plates have come loose during the adjustment, replace them as shown on left (both slide plates are different and will only fit in one side or the other).